



45ft, South West Durham, 2001, Cruiser Style



BERTHS:

2



TOILET:

Tecma pump out &
Porta potti



HEATING:

Alde



SURVEY:

May 2021



B.S.C:

New with sale



BLACKING:

May 2021



ENGINE:

Beta 35hp



LAYOUT:

Reverse

Venetian
marina

Venetian Marina (Nantwich) Ltd
Cholmondeston, Nantwich, Cheshire
CW5 6DD. 01270 528251
sales@venetianmarina.co.uk
www.venetianmarina.co.uk

**For further information please see
a member of the sales team.**

It is the responsibility of the buyer to ensure that all particulars given in the course of the purchase of the boat are accurate. Such particulars are intended only as a guide and do not constitute a term of any contract.



Boat Specification

Plating Specification	10/6/4mm
Flat, V-Hull or Keeled	Flat Hull
Fitted out By	Owner refit
Fixed Berths	One fixed bed
Additional Berths	-

Engine Specification

Engine Make	Beta 35hp
No. Of Cylinders	4cyl
Keel, Water or Air Cooled	Keel Cooled
Gearbox Make	PRM120
Aqua Drive	No
Bow Thruster	No
Diesel Tank Capacity	Unknown

Hot Water & Heating Systems

Source of Hot Water	Calorifier via engine
Central Heating	Alde
Solid Fuel Stove	Yes
Water Tank Capacity	Unknown
Material used	-
Additional Systems	-

Electrical System & Components

12 Volt Lighting	Yes
240 Volt Landline	Yes
Inverter	-
Generator	-
Batteries	One starter & three domestic
Additional Systems	Solar panel

Bathroom Specification

Type Of Toilet	Tecma pump out & Porta potti
Bath Fitted	Hip bath with over shower
Separate Shower Fitted	-
Vanity Basin Fitted	Yes
Additional Systems	-

Kitchen Specification

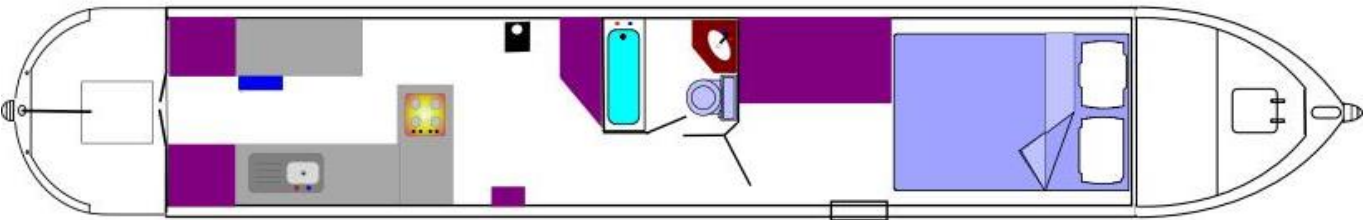
Make & Model Of Cooker	Vanette GG7000
Separate Hob	Four burner
Microwave Fitted	-
Make & Model Of Fridge	Inlander LEC
Gas, 12 volt or 240 volt	12/240v
Additional Systems	-

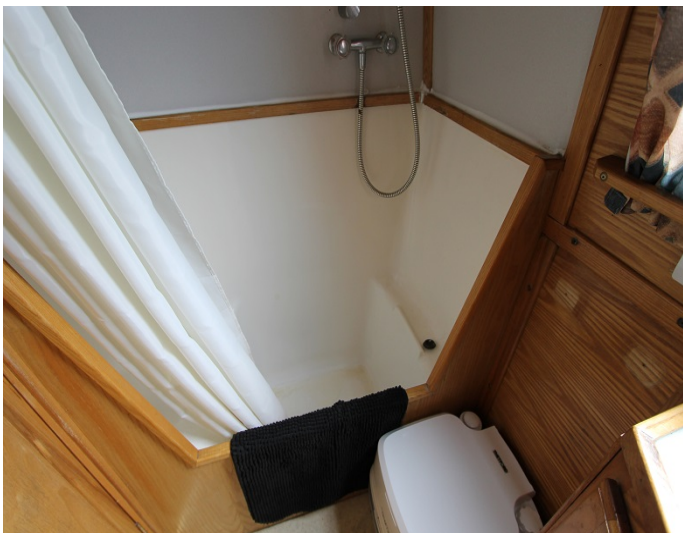
Fit Out Materials

Insulation Used	Sprayfoam
Types Of Wood Used	-
Window Types	Hopper
Materials Used	-
Bulls Eye, Pigeon Box or Houdini Hatch	-
Exterior Doors	, Back - Steel
Side Hatches	Yes x1
Front & Back Covers	No

History Of Vessel

Boat Safety Certificate	New with sale
Last Hull Blacking	May 2021
Anodes	May 2021
Further Maintenance	-
Recent Survey	May 2021
Additional Information	-





Venetian Marina (Nantwich) Ltd
 Cholmondeston, Nantwich, Cheshire
 CW5 6DD. 01270 528251
sales@venetianmarina.co.uk
www.venetianmarina.co.uk

**For further information please see
 a member of the sales team.**

It is the responsibility of the buyer to ensure that all particulars given in the course of the purchase of the boat are accurate. Such particulars are intended only as a guide and do not constitute a term of any contract.

