



### 40ft, Reeves, 2017, Traditional Style



**BERTHS:**

2



**TOILET:**

Thetford cassette



**HEATING:**

-



**SURVEY:**

August 2021



**B.S.C:**

26/05/2025



**BLACKING:**

2021



**ENGINE:**

Sabb 2 GHR 30hp



**LAYOUT:**

Standard

**Venetian  
marina**

Venetian Marina (Nantwich) Ltd  
Cholmondeston, Nantwich, Cheshire  
CW5 6DD. 01270 528251  
[sales@venetianmarina.co.uk](mailto:sales@venetianmarina.co.uk)  
[www.venetianmarina.co.uk](http://www.venetianmarina.co.uk)

**For further information please see  
a member of the sales team.**

It is the responsibility of the buyer to ensure that all particulars given in the course of the purchase of the boat are accurate. Such particulars are intended only as a guide and do not constitute a term of any contract.



## Boat Specification

Plating Specification  
Flat, V-Hull or Keeled  
Fitted out By  
Fixed Berths  
Additional Berths

10/6/4mm  
Flat Hull  
Clifton Cruisers  
Double bed under front deck  
-

## Engine Specification

Engine Make  
No. Of Cylinders  
Keel, Water or Air Cooled  
Gearbox Make  
Aqua Drive  
Bow Thruster  
Diesel Tank Capacity

Sabb 2 GHR 30hp  
2  
Keel Cooled  
Hurth 250  
No  
No  
Approx 40 gallons

## Hot Water & Heating Systems

Source of Hot Water  
Central Heating  
Solid Fuel Stove  
Water Tank Capacity  
Material used  
Additional Systems

Calorifier via engine + immersion heater  
-  
Heron  
80 Gallons  
Stainless Steel  
-

## Electrical System & Components

12 Volt Lighting  
240 Volt Landline  
Inverter  
Generator  
Batteries  
  
Additional Systems

Yes  
Yes  
Victron 1600W  
-  
Three domestic (new Sept 24) & one starter ( new Sept24)  
-

## Bathroom Specification

Type Of Toilet  
Bath Fitted  
Separate Shower Fitted  
Vanity Basin Fitted  
Additional Systems

Thetford cassette  
-  
Yes  
Yes  
-

## Kitchen Specification

Make & Model Of Cooker  
Separate Hob  
Microwave Fitted  
Make & Model Of Fridge  
Gas, 12 volt or 240 volt  
Additional Systems

Stoves DIT500  
-  
-  
Shoreline  
12 Volt  
-



## Fit Out Materials

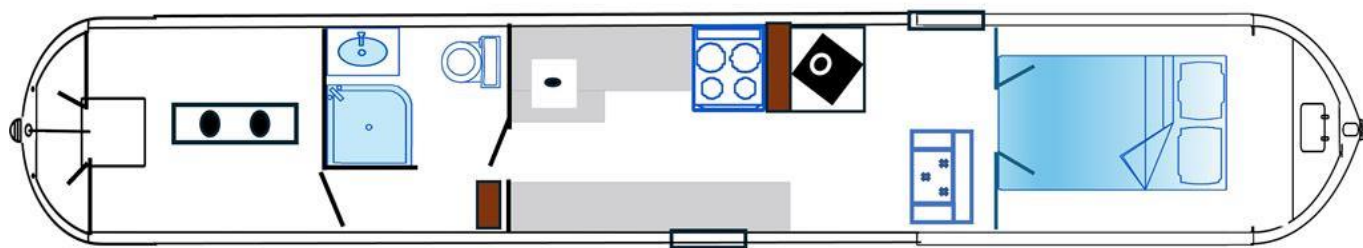
Insulation Used  
Types Of Wood Used  
Window Types  
Materials Used  
Bulls Eye, Pigeon Box or Houdini Hatch  
Exterior Doors  
Side Hatches  
Front & Back Covers

Sprayfoam  
Light oak panelling & trims  
6 portholes  
Brass  
One pigeon box  
Front - Steel, Back - Steel  
2  
-

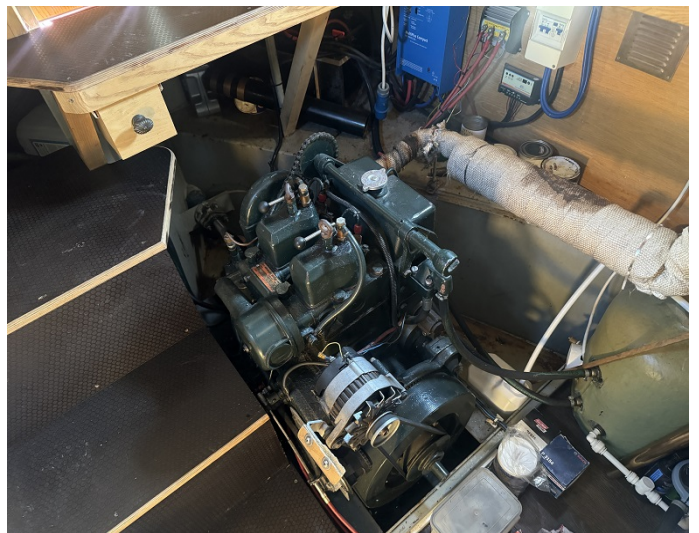
## History Of Vessel

Boat Safety Certificate  
Last Hull Blacking  
Anodes  
Further Maintenance  
Recent Survey  
Additional Information  
RCD/RCR Compliant?  
Further Information

26/05/2025  
2021  
Four fitted 2021  
-  
August 2021  
-  
Yes  
-







Venetian Marina (Nantwich) Ltd  
 Cholmondeston, Nantwich, Cheshire  
 CW5 6DD. 01270 528251  
[sales@venetianmarina.co.uk](mailto:sales@venetianmarina.co.uk)  
[www.venetianmarina.co.uk](http://www.venetianmarina.co.uk)

**For further information please see  
 a member of the sales team.**

It is the responsibility of the buyer to ensure that all particulars given in the course of the purchase of the boat are accurate. Such particulars are intended only as a guide and do not constitute a term of any contract.

