



58ft, Braidbar, 2006, Traditional Style



BERTHS:

6



TOILET:

Composting -
Pump out available



HEATING:

Webasto
Thermotop C



SURVEY:

29/02/2024



B.S.C:

27/01/2026



BLACKING:

May 2023



ENGINE:

Beta 43hp



LAYOUT:

Standard

Venetian
marina

Venetian Marina (Nantwich) Ltd
Cholmondeston, Nantwich, Cheshire
CW5 6DD. 01270 528251
sales@venetianmarina.co.uk
www.venetianmarina.co.uk

**For further information please see
a member of the sales team.**

It is the responsibility of the buyer to ensure that all particulars given in the course of the purchase of the boat are accurate. Such particulars are intended only as a guide and do not constitute a term of any contract.



Boat Specification

Plating Specification	10/6/5/4mm
Flat, V-Hull or Keeled	Flat Hull
Fitted out By	Braidbar
Fixed Berths	One fixed double bed
Additional Berths	Dinette converts to double bed + sofabed

Engine Specification

Engine Make	Beta 43hp
No. Of Cylinders	4cyl
Keel, Water or Air Cooled	Keel Cooled
Gearbox Make	PRM 150 D2
Aqua Drive	No
Bow Thruster	Yes
Diesel Tank Capacity	162 litres

Hot Water & Heating Systems

Source of Hot Water	Calorifier via engine + Webasto
Central Heating	Webasto Thermotop C
Solid Fuel Stove	Morso Squirrel
Water Tank Capacity	545 litres
Material used	Stainless steel
Additional Systems	-

Electrical System & Components

12 Volt Lighting	Yes
240 Volt Landline	Yes
Inverter	Victron Multiplus Compact 1600w
Generator	Clarke Power PG3800 ADV
Batteries	One starter and three domestic
Additional Systems	5x solar panels = 845w. Galvanic isolator

Bathroom Specification

Type Of Toilet	Composting - Pump out available
Bath Fitted	-
Separate Shower Fitted	Yes
Vanity Basin Fitted	Yes
Additional Systems	-

Kitchen Specification

Make & Model Of Cooker	Vanette GG7000
Separate Hob	Vanette 4000/2
Microwave Fitted	-
Make & Model Of Fridge	Zanussi Zert2170 fridge/freezer
Gas, 12 volt or 240 volt	240 volt
Additional Systems	Zanussi Aquacycle 1300 washing machine

Fit Out Materials

Insulation Used

Types Of Wood Used

Window Types

Materials Used

Bulls Eye, Pigeon Box or Houdini Hatch

Exterior Doors

Side Hatches

Front & Back Covers

Spray Foam

Oak and ash

7x hopper & 4x portholes

Gold Anodised

Houdini hatch x 1

Front - Steel, Back - Steel

Yes x1

Cratch cover and rear hatch & door cover

History Of Vessel

Boat Safety Certificate

Last Hull Blacking

Anodes

Further Maintenance

Recent Survey

Additional Information

RCD/RCR Compliant?

Further Information

27/01/2026

May 2023

May 2023

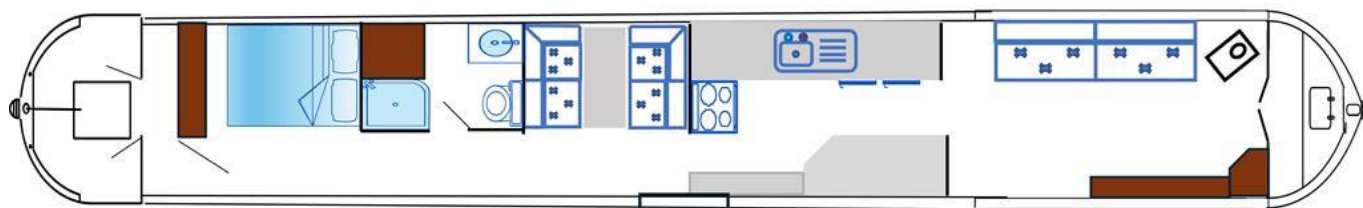
-

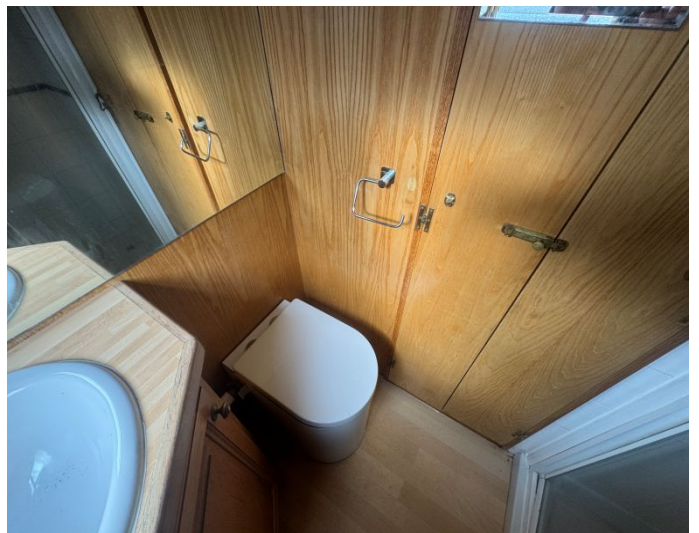
29/02/2024

-

Yes

-





Venetian Marina (Nantwich) Ltd
 Cholmondeston, Nantwich, Cheshire
 CW5 6DD. 01270 528251
sales@venetianmarina.co.uk
www.venetianmarina.co.uk

**For further information please see
 a member of the sales team.**

It is the responsibility of the buyer to ensure that all particulars given in the course of the purchase of the boat are accurate. Such particulars are intended only as a guide and do not constitute a term of any contract.

