



## 57ft, Doug Moore (1st boat built), 1985, Traditional Style



**BERTHS:**

2



**TOILET:**

Dometic cassette



**HEATING:**

via back boiler only



**SURVEY:**

-



**B.S.C:**

Aug 2024



**BLACKING:**

November 2022



**ENGINE:**

Ruston Hornsby  
2YD



**LAYOUT:**

Standard

**Venetian  
marina**

Venetian Marina (Nantwich) Ltd  
Cholmondeston, Nantwich, Cheshire  
CW5 6DD. 01270 528251  
sales@venetianmarina.co.uk  
www.venetianmarina.co.uk

**For further information please see  
a member of the sales team.**

It is the responsibility of the buyer to ensure that all particulars given in the course of the purchase of the boat are accurate. Such particulars are intended only as a guide and do not constitute a term of any contract.



## Boat Specification

Plating Specification	10/8mm
Flat, V-Hull or Keeled	Flat Hull
Fitted out By	Doug Moore
Fixed Berths	-
Additional Berths	Pull down bed in boatsman's cabin

## Engine Specification

Engine Make	Ruston Hornsby 2YD
No. Of Cylinders	2
Keel, Water or Air Cooled	Keel Cooled
Gearbox Make	David Brown M200D MK3
Aqua Drive	No
Bow Thruster	No
Diesel Tank Capacity	-

## Hot Water & Heating Systems

Source of Hot Water	Morco boiler
Central Heating	via back boiler only
Solid Fuel Stove	Boatman stove
Water Tank Capacity	-
Material used	Stainless steel
Additional Systems	-

## Electrical System & Components

12 Volt Lighting	Yes
240 Volt Landline	Yes
Inverter	Maypole 1kw
Generator	-
Batteries	4 domestic & 2 starter
Additional Systems	solar with Epever controller and Victron charger

## Bathroom Specification

Type Of Toilet	Dometic cassette
Bath Fitted	small bath and mixer shower
Separate Shower Fitted	-
Vanity Basin Fitted	Yes
Additional Systems	-

## Kitchen Specification

Make & Model Of Cooker	Statesman Legacy
Separate Hob	-
Microwave Fitted	-
Make & Model Of Fridge	Cookology fridge/freezer
Gas, 12 volt or 240 volt	240 volt
Additional Systems	-

## Fit Out Materials

Insulation Used

Types Of Wood Used

Window Types

Materials Used

Bulls Eye, Pigeon Box or Houdini Hatch

Exterior Doors

Side Hatches

Front & Back Covers

Polystyrene

Oak effect

Hopper style and 2 port holes

Powder coated

1 x pigeon box

Front - wood, Back - steel

2 x side hatches

-

## History Of Vessel

Boat Safety Certificate

Last Hull Blacking

Anodes

Further Maintenance

Recent Survey

Additional Information

RCD/RCR Compliant?

Further Information

Aug 2024

November 2022

November 2022

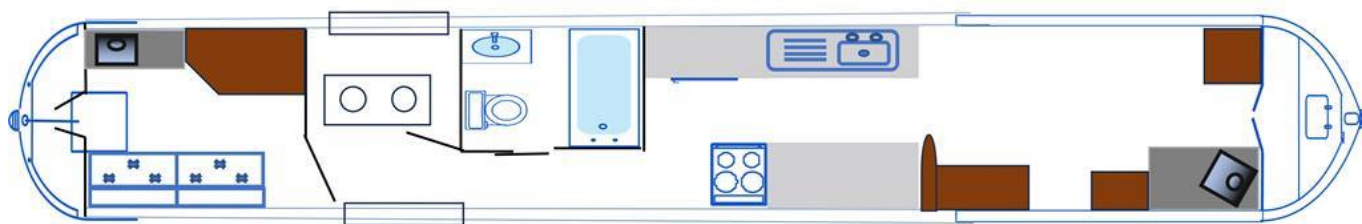
-

-

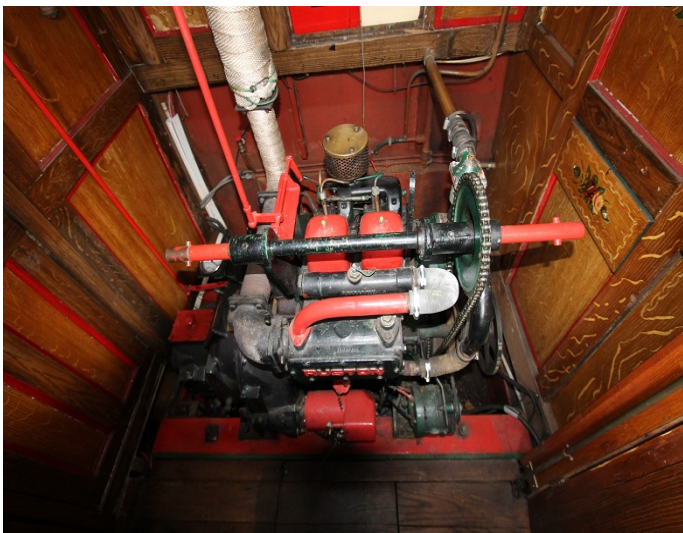
-

Not Applicable

-







Venetian Marina (Nantwich) Ltd  
 Cholmondeston, Nantwich, Cheshire  
 CW5 6DD. 01270 528251  
[sales@venetianmarina.co.uk](mailto:sales@venetianmarina.co.uk)  
[www.venetianmarina.co.uk](http://www.venetianmarina.co.uk)

**For further information please see  
 a member of the sales team.**

It is the responsibility of the buyer to ensure that all particulars given in the course of the purchase of the boat are accurate. Such particulars are intended only as a guide and do not constitute a term of any contract.

