



Admiral class BUTTY BOAT

70.5ft, W J Yarwood & Son LTD, 1959, Traditional Style



BERTHS:

2



TOILET:

-



HEATING:

-



SURVEY:

-



B.S.C:

13th February
2029



BLACKING:

-



ENGINE:

-



LAYOUT:

-

**Venetian
marina**

Venetian Marina (Nantwich) Ltd
Cholmondeston, Nantwich, Cheshire
CW5 6DD. 01270 528251
sales@venetianmarina.co.uk
www.venetianmarina.co.uk

**For further information please see
a member of the sales team.**

It is the responsibility of the buyer to ensure that all particulars given in the course of the purchase of the boat are accurate. Such particulars are intended only as a guide and do not constitute a term of any contract.



Boat Specification

Plating Specification	10/6mm (New base & footings in 2015 by Roger Fuller Boat Yard, Stone)
Flat, V-Hull or Keeled	Flat Hull
Fitted out By	-
Fixed Berths	-
Additional Berths	Boatmans double drop down bed

Engine Specification

Engine Make	-
No. Of Cylinders	-
Keel, Water or Air Cooled	-
Gearbox Make	-
Aqua Drive	No
Bow Thruster	No
Diesel Tank Capacity	-

Hot Water & Heating Systems

Source of Hot Water	-
Central Heating	-
Solid Fuel Stove	-
Water Tank Capacity	-
Material used	-
Additional Systems	-

Electrical System & Components

12 Volt Lighting	Yes
240 Volt Landline	-
Inverter	-
Generator	-
Batteries	One domestic battery
Additional Systems	One solar panel 60w

Bathroom Specification

Type Of Toilet	-
Bath Fitted	-
Separate Shower Fitted	-
Vanity Basin Fitted	-
Additional Systems	-

Kitchen Specification

Make & Model Of Cooker	-
Separate Hob	-
Microwave Fitted	-
Make & Model Of Fridge	-
Gas, 12 volt or 240 volt	-
Additional Systems	-

Fit Out Materials

Insulation Used

Types Of Wood Used

Window Types

Materials Used

Bulls Eye, Pigeon Box or Houdini Hatch

Exterior Doors

Side Hatches

Front & Back Covers

-

Scumbled woodwork with roses & castles by David Moore

Portholes x4

Painted brass

-

Front - Steel

-

-

History Of Vessel

Boat Safety Certificate

Last Hull Blacking

Anodes

Further Maintenance

Recent Survey

Additional Information

RCD/RCR Compliant?

Further Information

13th February 2029

-

-

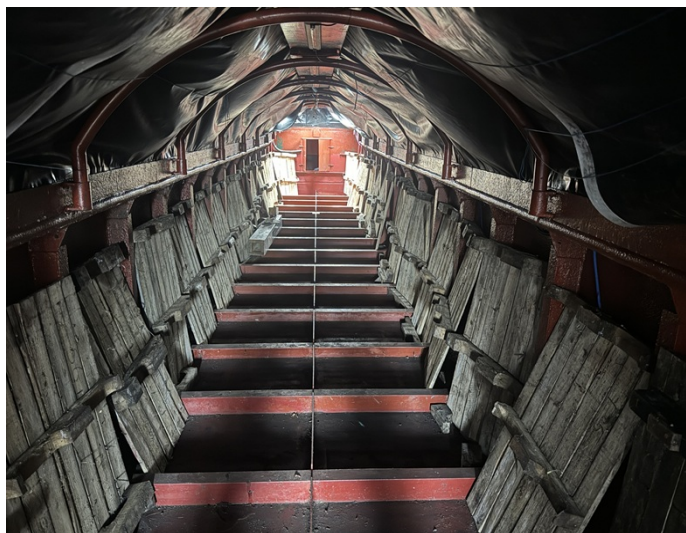
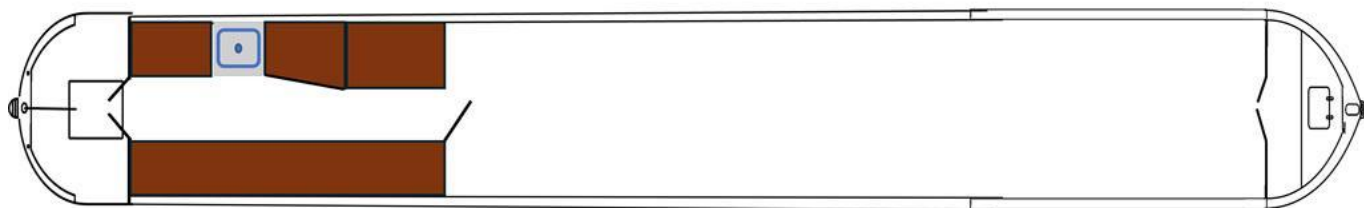
-

-

Admiral class BUTTY BOAT

Not Applicable

Keppel was one of the last four working boats built for British Waterways Board in 1959 and launched in 1960, she was paired with her motor boat, NB Lindsay, as a canal carrier before the railways took over





Venetian Marina (Nantwich) Ltd
 Cholmondeston, Nantwich, Cheshire
 CW5 6DD. 01270 528251
sales@venetianmarina.co.uk
www.venetianmarina.co.uk

**For further information please see
 a member of the sales team.**

It is the responsibility of the buyer to ensure that all particulars given in the course of the purchase of the boat are accurate. Such particulars are intended only as a guide and do not constitute a term of any contract.

